

CONSULTANT

SEAL



Bid and Permit Set  
**Commonwealth Bank**  
 801 Blankenbaker Pkwy  
 Louisville, Ky

PROJECT DATE

**2/1/2010**

REVISIONS

No.	Description	Date

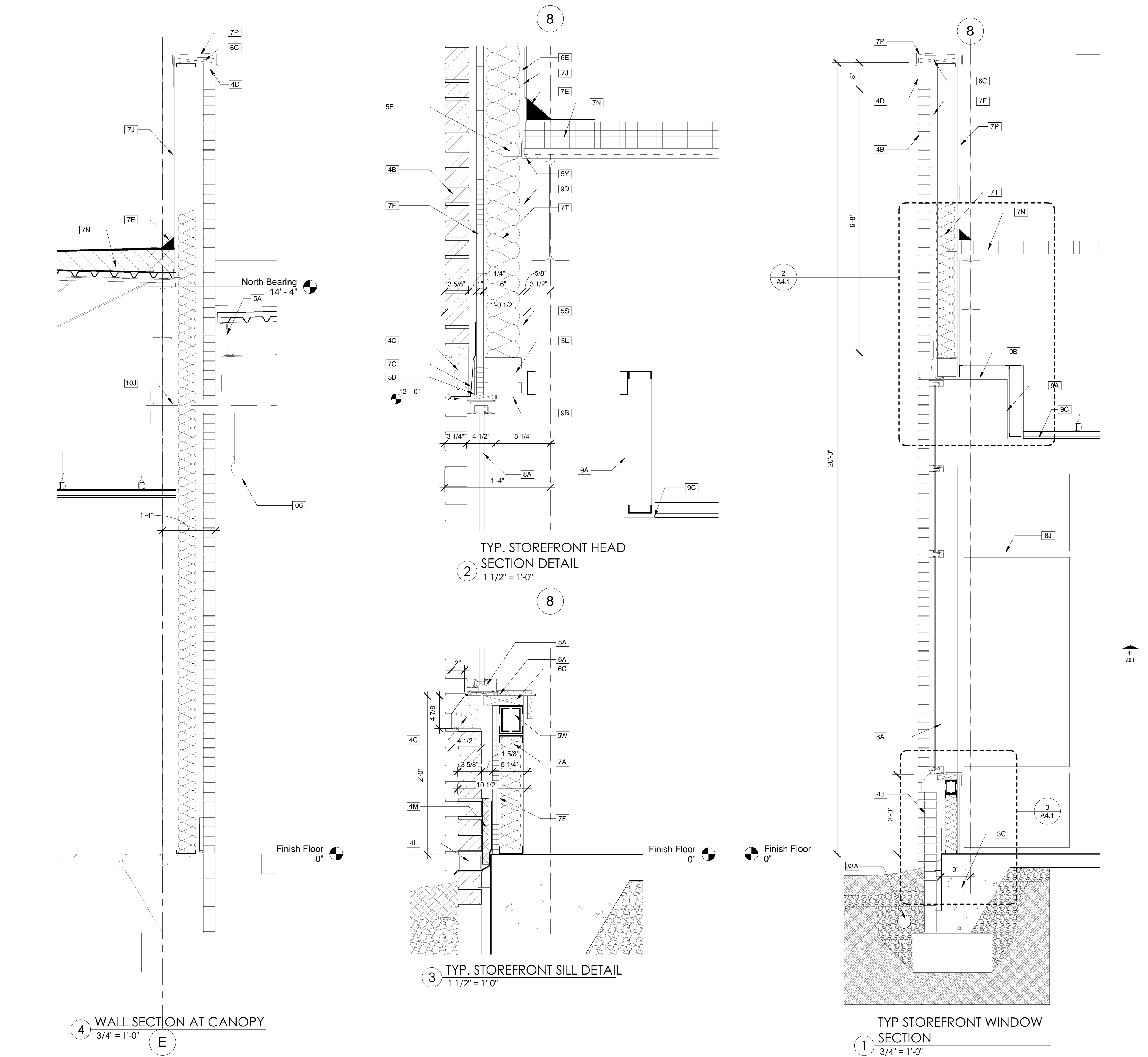
DRAWN BY

**DS**

SHEET

**WALL SECTIONS**

**A4.1**  
890



KEYNOTE	DESCRIPTION
3C	CAST IN PLACE CONCRETE FOUNDATION FOOTING. REFER TO STRUCTURAL DRAWINGS
4B	ALL BRICK MASONRY VENEER TO BE TYPE 1 U.N.O.
4C	3-5/8"(W) X 7-1/2"(T) PRE-CAST CONCRETE LINTEL WITH 1/4"X 1/4"
4D	3-5/8"(W) X 7-1/2"(T) PRE-CAST CONCRETE COPING.
4J	USE TYPE 2 BRICK UNDER WINDOWS. RECESS 2" FROM ADJACENT MASONRY, TYPICAL
4L	MORTAR NET WEEP VENTS AT 24" o/c
4M	CONTINUOUS MORTAR NET (1" AT 10" WALL SECTION, 2" AT 12" WALL SECTION)
5A	STEEL BEAM, REFER TO STRUCTURAL DRAWINGS.
5B	STEEL ANGLE LINTEL. REFER TO STRUCTURAL PLANS
5F	L2X2X97W CLIP ANGLE. FASTEN TO STUDS WITH (2) #10 EACH LEG. CONNECT TO 3"X3"X1/4" STEEL PERIMETER ANGLE WITH (2) #12
5L	DOUBLE 600S162-43 STUDS WITH 600T200-43 CONNECTORS.
5S	600S162-33 STUD FRAMING 16" O.C. MAX.
5W	WALL PANEL UNDER STOREFRONT. DOUBLE 400S162-43 STUDS WITH 400T200-43 CONNECTORS, OVER 400S162-43 STUDS AT 16" O.C.,
5Y	3"X3"X1/4" PERIMETER ANGLE. WELD TO JOIST AND ATTACH TO STUD WALL WITH CLIP ANGLE
6A	MILLWORK PROVIDED AND INSTALLED BY GC. INSTALL BLOCKING PER 08/A6.0 AND AS NEEDED.
6C	TREATED WOOD BLOCKING
6E	1/2" EXTERIOR GRADE PLYWOOD SHEATHING
7A	3-1/2" R-13 BATT INSULATION.
7C	FLEXIBLE ADHESIVE WALL FLASHING
7E	TAPERED FIBER CANT INSTALLED UNDER FLASHING
7F	1" STYROFOAM STRUCTURAL INSULATED SHEATHING (R5.5) OR APPROVED EQUAL
7J	SINGLE PLY TPO ROOFING SYSTEM. EXTEND MEMBRANE FULL HEIGHT OF PARAPET WALL. FASTEN AND COUNTER FLASH PER MANUFACTURER'S
7N	4" POLYISOCYANURATE INSULATION OVER METAL DECK.
7P	PRE-FINISHED ALUMINUM COPING. SLOPE TOWARD ROOF.
7T	6" R-19 BATT INSULATION. EXTEND 4" MIN. ABOVE ROOF INSULATION
8A	2" X 4 1/2" STORE FRONT SYSTEM W/1" INSULATED GLASS.
8J	INTERIOR STOREFRONT WITH ANODIZED FINISH FRAMES TO MATCH EXTERIOR. REFER TO A7.0 FOR DETAILS
9A	GYPSUM SOFFIT. 1 LAYER 5/8" GYPSUM BOARD OVER METAL STUD FRAMING @ MAX. 24" O.C. BRACE TO STRUCTURE.
9B	1 LAYER 5/8" GYPSUM BOARD CEILING, MOUNTED ON 1-5/8" HAT CHANNELS. FASTEN TO SUSPENDED TRACK AT HEIGHT INDICATED ON
9C	2'X2' ACOUSTIC TILE CEILING. MOUNT AT HEIGHT INDICATED ON PLAN USING SUSPENDED FRAMING. BRACE TO STRUCTURE.
9D	5/8" GYPSUM BOARD
10J	VACUUM AIR TUBE SYSTEM SUPPLIED AND INSTALLED BY OWNER
33A	4" FOUNDATION DRAINAGE PIPE