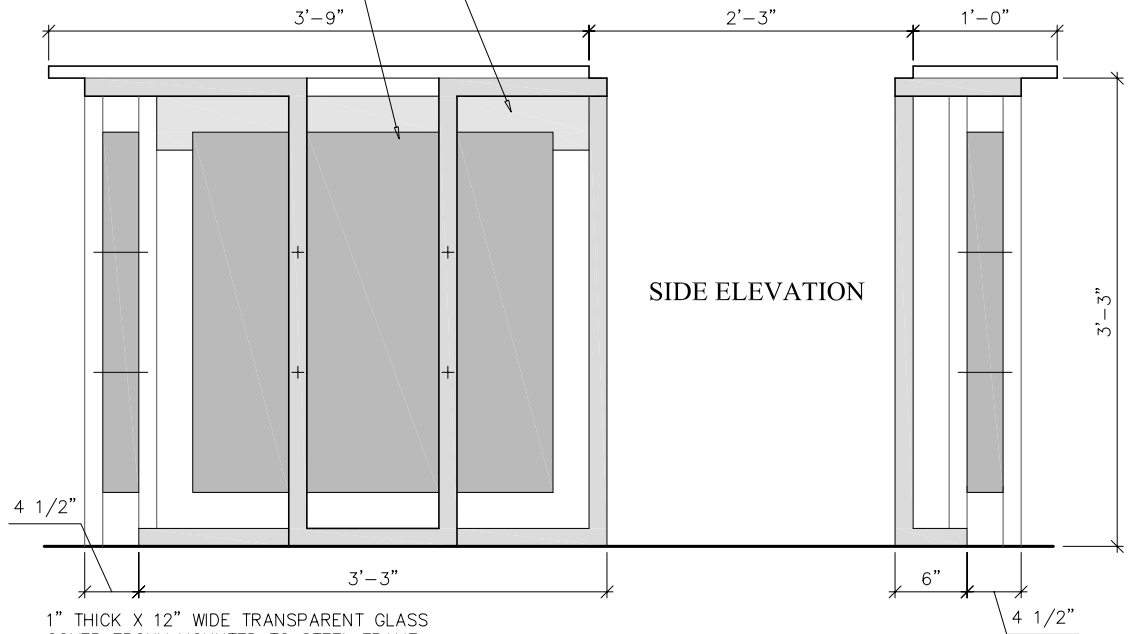


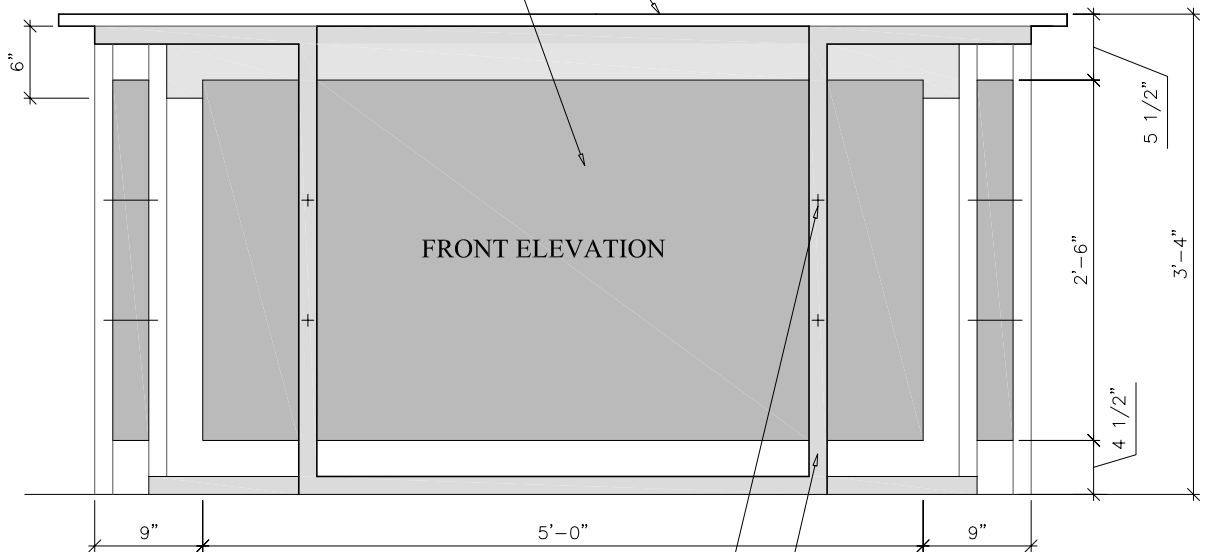
6" X 1/2" TRANSLUCENT GLASS BORDER  
BOLTED TO STEEL FRAME

3" THICK 2'-6"H X 2'-6"W  
POLISHED FACE GRANITE PANEL



1" THICK X 12" WIDE TRANSPARENT GLASS  
COVER EPOXY MOUNTED TO STEEL FRAME

3" THICK 2'-6"H X 5'-0"W POLISHED FACE  
GRANITE PANEL



BOLTED CONNECTION BETWEEN STEEL FRAME AND GRANITE PANELS

1 1/2" X 1 1/2" VERTICAL MEMBER OF WELDED STEEL FRAME. GRIND EDGES  
SMOOTH AND FINISH WITH CHROME COATING, TYPICAL ALL SURFACES