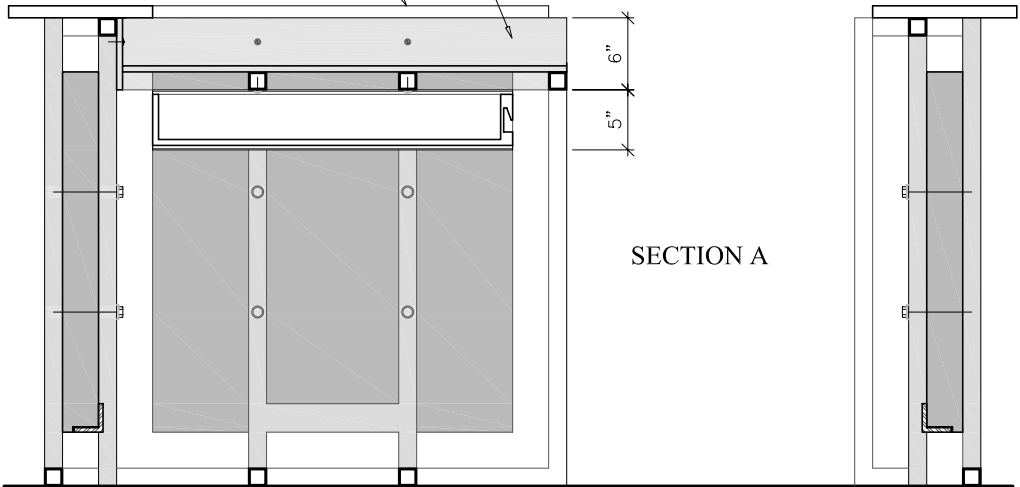


6" X 1/2" TRANSLUCENT GLASS BORDER  
EPOXY MOUNTED TO STEEL FRAME

1" THICK X 12" WIDE TRANSPARENT GLASS  
COVER BOLTED TO STEEL FRAME

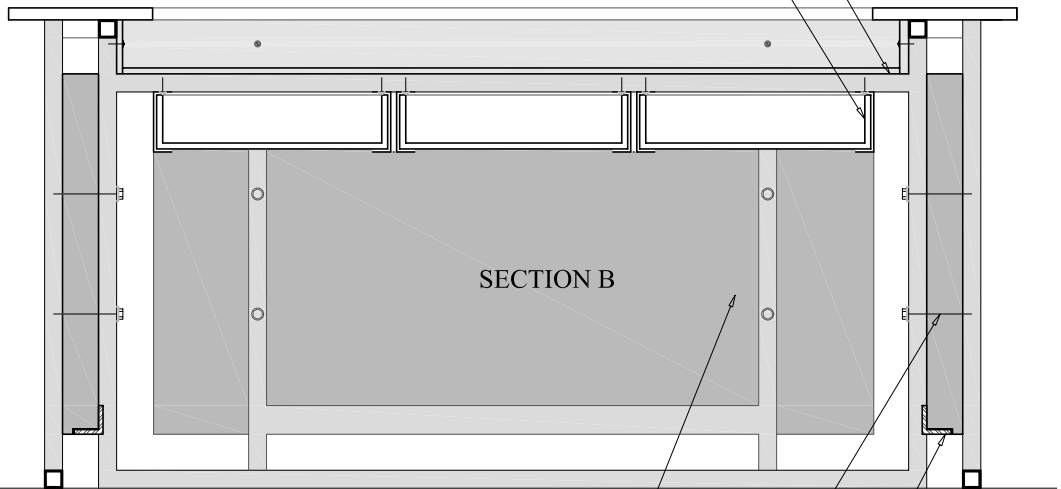


SECTION A

STEEL HORIZONTAL CROSS BRACING

1 1/2" X 1 1/2" HORIZONTAL MEMBER OF WELDED STEEL FRAME. GRIND EDGES  
SMOOTH AND FINISH WITH CHROME COATING, TYPICAL ALL SURFACES

LIGHT GAUGE STEEL DRAWER SYSTEM BOLTED TO STEEL FRAME ABOVE.



SECTION B

3" THICK 2'-6"H X 5'-0"W POLISHED FACE GRANITE PANEL

BOLTED CONNECTION BETWEEN STEEL FRAME AND GRANITE PANELS

CUT INSET AT BASE OF GRANITE PANEL TO BEAR ON STEEL ANGLE (WELDED TO FRAME)